

Figurative Language

Simile Reference Notebook

When a writer uses **figurative language**, they want to appeal to the reader's **senses, imagination** or **sense of humour**. The meaning of a figurative language phrase goes **beyond the literal meaning** of each individual word.

Song lyrics are a great place to find figurative language. Can you find the examples of **SIMILE** in this song excerpt?

Cut out around the edges of the box and glue the song into your book. Highlight each **SIMILE** you find and explain what it really means.

“Firework” by Katy Perry (excerpt)

Do you ever feel like a plastic bag,
Drifting through the wind, wanting to start
again?

Do you ever feel, feel so paper-thin
Like a house of cards, one blow from caving
in?

You just gotta ignite the light, and let it shine
Just own the night like the Fourth of July.



Hint: in the USA, July 4th is a very special national holiday called Independence Day. Americans celebrate with parties and fireworks.

Now cut out this quick reference guide to SIMILES and glue it into your book to remind you how this type of figurative language works.

Similes

We use a simile to compare two unlike things, using the words *like*, *as*, *than* and *as if*.

The two things being compared must be totally different, for example:

The children played in the sandpit, as happy as pigs in mud.

[children and pigs are not the same!]

*Mum says my little brother's growing so fast he's going to be taller **than** a tree!*

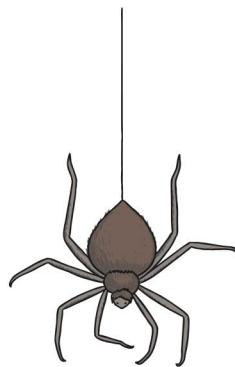
[little brothers and trees are different!]

*The cycle racers shot past **like** lightning.*

[cyclists and lightning - different!]

*Her handwriting's so bad, it looks **as if** a spider crawled through some ink.*

[spiders definitely don't write – except in 'Charlotte's Web', of course!]



Answers:

“Firework” by Katy Perry (excerpt)

Do you ever feel **like a plastic bag**,
Drifting through the wind, wanting to start
again?

Do you ever feel, feel so paper-thin
Like a house of cards, one blow from caving
in?

A playing-card structure is very unstable – a tiny tap or gust of air can knock it down. The singer feels that his/her life isn't very secure.

t gotta ignite the light, and let it shine
own the night **like the Fourth of July**.



Plastic bags are very thin and can be whipped about by the wind. The singer feels his/her life is aimless like this, with other people controlling what s/he does.

4th July celebrations are full of light, colour, food, singing, parties and games. It's a day which really dominates the calendar – the singer is encouraging the listener to be in charge of their life.